

Your Personalised Jaguar

NEW JAGUAR F-TYPE

F-TYPE R 5.0 litre V8 575PS Supercharged Petrol (Automatic) All Wheel Drive



THE ART OF PERFORMANCE



EXTERIOR



DESCRIPTION	
EXTERIOR FEATURES	
COLOURS	Icy White
PAINT FINISHES	Gloss finish
WHEELS	20" Style 1041, 10 spoke, Satin Black with contrast Diamond Turned finish
BRAKES AND CALIPERS	Red brake calipers with 380mm front and 376mm rear brakes
ROOF COLOUR	Beige fully electric convertible roof
ROLL OVER PROTECTION BARS	Gloss Black roll over protection bars
HEADLIGHTS	Pixel LED headlights with signature DRL
SPOILER	Deployable boot lid spoiler

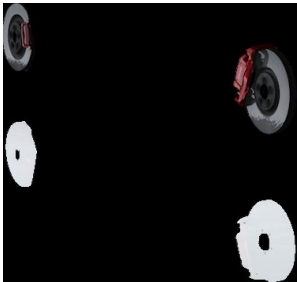


COLOURS

PAINT
FINISHES



WHEELS



BRAKES
AND
CALIPERS



ROOF
COLOUR



ROLL OVER
PROTEC-
TION BARS

EXTERIOR

DESCRIPTION

Exterior Black Design Pack

Body-coloured front splitter
Gloss Black grille surround
Gloss Black side vents
Body-coloured side sills
Gloss Black roll over protection bars
Body-coloured rear venturi
Gloss Black rear valance
Black JAGUAR script and leaper
Black F-TYPE badge
Black side vent leaper

INTERIOR



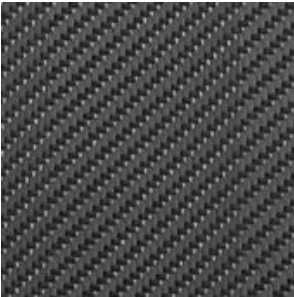
DESCRIPTION	
INTERIOR FEATURES	
TRIM	Ebony/Mars Red Windsor leather Performance seats with Ebony/Mars Red interior
SEATING	R interior
SEAT FUNCTIONALITY	12-way electric memory front seats
HEADLINING	Ebony suedecloth headlining
VENEER	Carbon Fibre centre console
CARPET MATS	Ebony Sport carpet mats
MATERIAL	R branded leather steering wheel
HEATED	Heated steering wheel
STEERING WHEELS	Aluminium gearshift paddles
AUDIO	Meridian™ Surround Sound System



TRIM



HEADLINING



VENEER



CARPET
MATS



MATERIAL



HEATED

OPTIONS

DESCRIPTION	
OPTION PACKS	
Climate Pack	Heated windscreen Heated steering wheel Two-zone Climate Control
Blind Spot Assist Pack	Blind Spot Assist Rear Traffic Monitor
EXTERIOR FEATURES	
Heated windscreen	Offers a quick and convenient way to defrost or demist the windscreen.
INTERIOR FEATURES	
Suedecloth sunvisors with vanity mirrors	Reduce glare from the sun with luxurious, Suedecloth wrapped sunvisors with mirror.
Two-zone Climate Control	Create the ideal comfort for you and your passenger with 2-Zone climate control. Odour Filtration ensures a fresher air quality regardless of outdoor conditions.
Illuminated metal treadplates with brand-name script	Elegantly styled stainless steel sill treadplate finishers with Jaguar script for driver or passenger doors. Illuminates when either the driver or passenger doors are opened. Highlighted by soft Phosphor Blue lighting. Also available as a retailer fit accessory.
DRIVER ASSISTANCE	
Park Assist	Parallel parking is made easier than ever by steering your vehicle into a suitable space. Selecting either Drive or Reverse, you only have to control the vehicle's speed with the brake and accelerator pedals. Steering will be done automatically by the car. Graphics and notifications guide you through the manoeuvres. Park Assist will also steer you out of a space, taking all of the stress out of parking.

JAGUAR ACCESSORIES

DESCRIPTION

EXTERIOR ACCESSORIES

Wind Deflector

Simple to fit and remove, the wind deflector reduces air draught and turbulence in the passenger compartment, even at high speeds. Supplied with a Jaguar branded stowage bag.

Part number: T2R11321

Carbon Fibre Mirror Cover

High grade Carbon Fibre mirror covers provide a performance-inspired styling upgrade. Left and right side options available.

Part numbers: T2R5389, T2R5390

Silver Weave Carbon Fibre Roll Hoops

High grade Silver Weave Carbon Fibre roll hoops featuring a 2x2 twill weave and a High Gloss lacquered finish. Provides an eye-catching, performance-inspired styling enhancement coupled with weight-saving benefits associated with carbon fibre. Left and right side options available.

Part numbers: T2R23378, T2R23379

INTERIOR ACCESSORIES

Rubber Mats

Hard wearing Jaguar branded rubber mats provide added protection for your vehicle's carpets.

Part number: T2R16568PVJ

Bright Aluminium Gearshift Paddles

Replacement steering wheel gearshift paddles offered in a premium aluminium material providing a high quality finish to a key contact point in the vehicle. Manufactured from billet machined aluminium, the paddles are hand brushed for a premium finish and anodised to ensure they will not deteriorate with wear.

Part number: T2R6547MMU

Sill Treadplates - Personalised, Illuminated

Elegantly styled stainless steel sill treadplate finisher for driver or passenger doors. Illuminate when either the driver or passenger doors are opened. Highlighted by soft phosphor blue lighting. Allows customer to specify a monochrome 'motif' in a choice of approved typefaces/scripts.

Part number: T2R6091

WHEELS & WHEEL ACCESSORIES

DESCRIPTION	
Alloy Wheel - 20" Style 5042, 5 spoke, Forged, Carbon Fibre and Satin Dark Grey Diamond Turned finish	<p>Personalise your vehicle with a selection of alloy wheels featuring a wide range of contemporary and dynamic designs.</p> <p>Part number front: T2R20830 Part number rear: T2R20831</p>
Styled Valve Caps - Black Jack	<p>Add the finishing touch to your vehicle's wheels with a range of unique custom valve caps.</p> <p>Part number: C2D19598</p> <p>Sold as a set of four.</p>

Accessories are fitted by your local retailer.

STANDARD FEATURES

EXTERIOR FEATURES		
Rain sensing windscreen wipers	Solar attenuating windscreen	Auto-dimming, power fold, heated door mirrors with memory
Flush exterior door handles	Wind deflector	Tyre Repair System
LED tail lights	JAGUAR script and leaper	F-TYPE badge
Switchable Active Exhaust	Quad outboard mounted exhaust pipes	

DYNAMICS		
Configurable Dynamics	Adaptive Dynamics	Electronic Active Differential with Torque Vectoring by Braking
Rain, Ice, Snow Mode	Dynamic Stability Control (DSC)	Electric Parking Brake (EPB)
Anti-lock Braking System (ABS)	Electronic Brake-force Distribution (EBD)	

INTERIOR FEATURES		
Electrically adjustable steering column with memory	Sunvisors with vanity mirrors	Auto-dimming interior rear view mirror
Overhead lighting console	Deployable front air vents	Graphite vent surrounds
Bright metal pedals	Premium cabin lighting	Single-zone Climate Control
Pollen filter	Twin front cupholders	Low line cubby box
Metal treadplates with R branding		

INFOTAINMENT		
10" Touch Pro	Interactive Driver Display	Connected Navigation Pro
Online Pack	Smartphone Pack	Remote
Digital Audio Broadcast (DAB) radio	Bluetooth® connectivity	Power socket(s)
USB and 12V socket in centre console		

SAFETY AND SECURITY			
Driver Condition Monitor	Emergency Braking	Emergency Brake Assist	
Tyre Pressure Monitoring System (TPMS)	Remote central locking with deadlocks and drive-away locking	Perimetric alarm and immobiliser	
Roll-over protection system	Valet Mode	4 airbags	

DRIVER ASSISTANCE			
Rear Camera	Lane Keep Assist	Front and Rear Parking Aid	
Traffic Sign Recognition and Adaptive Speed Limiter	Cruise Control and Speed Limiter	Keyless Entry	
Boot entrapment release lever	Push Button Start		

TECHNICAL SPECIFICATIONS

PERFORMANCE	
Maximum speed km/h (mph)	300 (186)
Acceleration (secs) 0-100 km/h (0-60mph)	3,7 (3,5)

FUEL ECONOMY	
Combined NEDC Equivalent (NEDC2) Consumption - l/100km (mpg)	11,0 (25,6)†
Combined NEDC Equivalent (NEDC2) CO ₂ Emissions - g/km	252†
Combined WLTP Consumption TEL - l/100km (mpg)	-
Combined WLTP Consumption TEH - l/100km (mpg)	10,7 (26,4)‡
Combined WLTP CO ₂ Emissions TEL - g/km	-
Combined WLTP CO ₂ Emissions TEH - g/km	243‡
Tank capacity (litres approx.)	70

POWERTRAIN	
Maximum power (PS/kW/rpm)	575/423/6.500
Maximum torque (Nm/rpm)	700/3.500-5.000
Transmission	Automatic
Capacity (cc)	5.000

WEIGHTS	
Unladen weight (EU) (kg) - Includes a 75kg driver, full fluids and 90% fuel	1.838
Unladen weight (DIN) (kg) - Includes full fluids and 90% fuel	1.763
Gross Vehicle Weight (GVW) (kg)	2.150

DIMENSIONS	
Height (mm)	1.307
Length (mm)	4.470
Width with mirrors folded (mm)	1.923
Width with mirrors out (mm)	2.042
Front wheel track (mm)	1.584
Rear wheel track (mm)	1.610
Wheelbase (mm)	2.622

HEADROOM	
Maximum front headroom with standard roof (mm)	939
Maximum front headroom with panoramic roof (mm)	N/A

LEGROOM

Maximum front legroom (mm)	1.088
----------------------------	-------

LOADSPACE CAPACITY

Height (mm)	163
Width (mm)	1.249
Width between arches (mm)	789
Maximum loadspace volume - Dry (litres)	132✧
Maximum loadspace volume - Wet (litres)	233◆

GROUND CLEARANCE

Standard ride height (mm)	107
---------------------------	-----

TURNING CIRCLE

Kerb-to-kerb (m)	11,27
Wall-to-wall (m)	11
Turns lock-to-lock (no. of turns)	2,21

YOUR CONFIGURATION

https://rules.config.jaguar.com/jag2/r/summary/_/en_xi/f-type_k21/47vjp/a-50p-575-aawd_a-cecvbs_sr1/a-079de-jet_a-svo3_c2d19598_n-017dl_n-017wb_n-025ln_n-031jr_n-032gk-cvsr_n-041dk_n-048bd_n-063cm_n-078cp_n-086mb_n-115at_n-300xa_t2r11321_t2r16568pvj_t2r20830_t2r23378_t2r5389_t2r6091_t2r6547mmu



^①Engine data has not been re-certified in 2019. Data shown conforms to the 2017 NEDC certification.

†The figures provided are NEDC2 calculated from official manufacturer's WLTP tests in accordance with EU legislation. For comparison purposes only. Real world figures may differ. CO₂ and fuel economy figures may vary according to wheel fitment and optional extras fitted. NEDC2 are figures calculated using a Government formula from WLTP figures equivalent to what they would have been under the old NEDC test. The correct tax treatment can then be applied.

‡WLTP is the new official EU test used to calculate standardised fuel consumption and CO₂ figures for passenger cars. It measures fuel, energy consumption, range and emissions. This is designed to provide figures closer to real-world driving behaviour. It tests vehicles with optional equipment and with a more demanding test procedure and driving profile. TEL (Test Energy Low) and TEH (Test Energy High) figures are shown as a range under WLTP testing measures. TEL refers to the lowest/most economical figures (with the lightest set of options). TEH refers to the highest/least economical figures (with the heaviest set of options). WLTP legislation dictates that where there is 5g CO₂ variance between TEL and TEH, only the TEH is declared.

◇1,584 on 20" wheels.

◆1,628 on 20" wheels.

◇Dry: Volume as measured with VDA-compliant solid blocks (200mm x 50mm x 100mm).

◆Wet: Volume as measured by simulating the loadspace filled with liquid.

- [International Sites](#)
- [Sitemap](#)
- [Terms and Conditions](#)
- [Cookie and Privacy Policy](#)
- [Accessibility Statement](#)

© Jaguar Land Rover Limited 2020: Registered office: Abbey Road, Whitley, Coventry CV3 4LF. Registered in England No: 1672070

